



# MONTHLY MEMBERSHIP PROGRESS REPORT

District 14 F

Results as of: 07/31/2018

GMT: CINDY GREGG

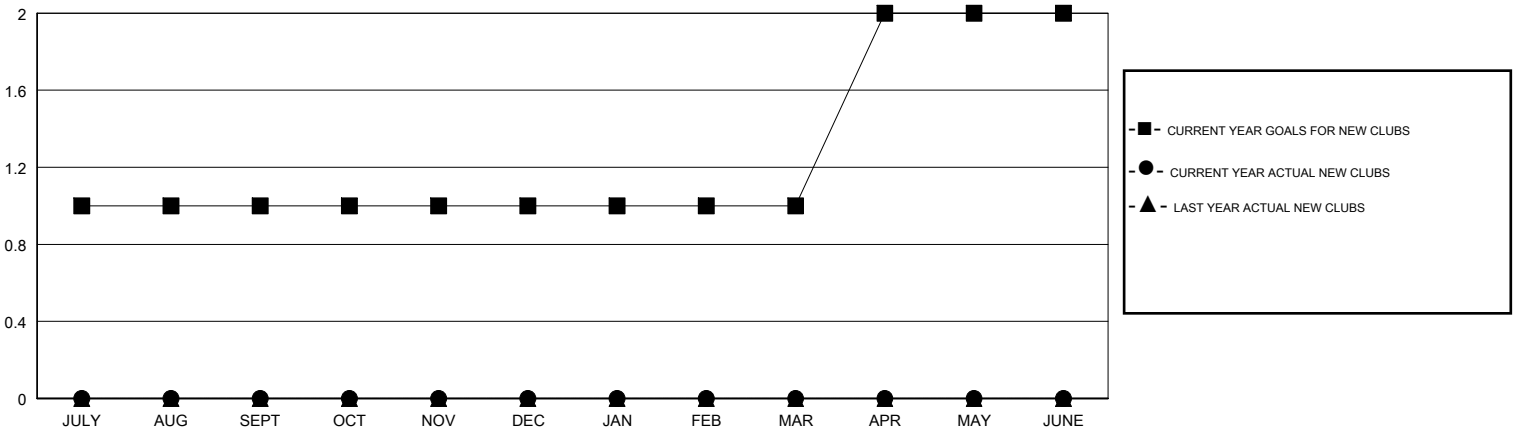
LOCATION PENNSYLVANIA

GMT CA

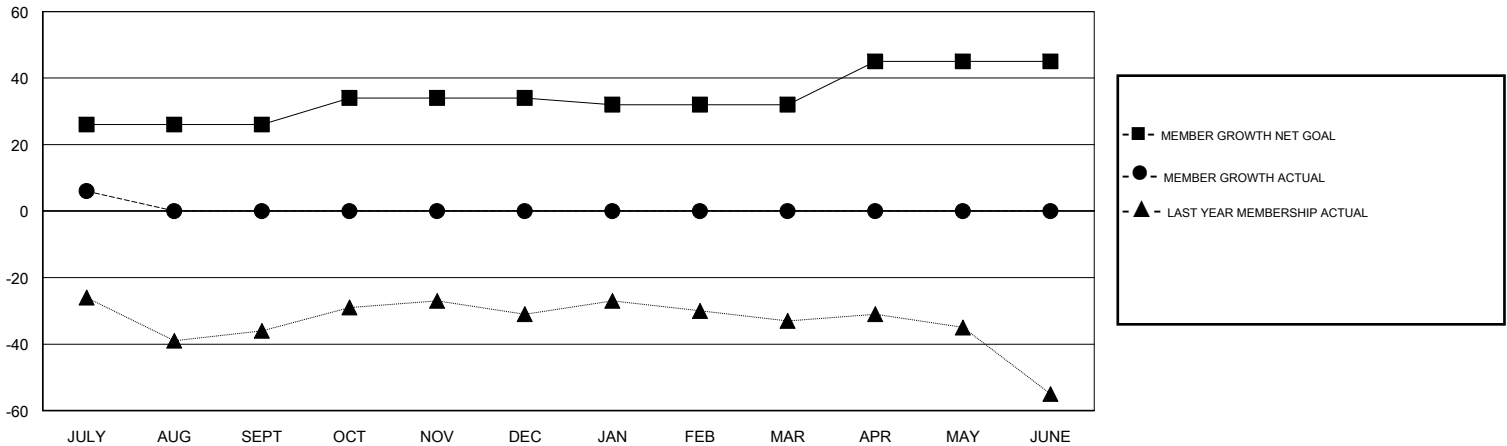
Clubs			
RESULTS FOR 2018-2019			
QUARTER	NEW CLUB GOAL	NEW CLUBS	DROPPED CLUBS
JULY/AUG/SEPT	1	0	0
OCT/NOV/DEC	0	0	0
JAN/FEB/MAR	0	0	0
APR/MAY/JUNE	1	0	0

Members			
RESULTS FOR 2018-2019			
QUARTER	MEMBER GROWTH NET GOAL	MEMBER GROWTH ACTUAL	DROPPED MEMBERS ACTUAL (including transfers)
JULY/AUG/SEPT	26	10	4
OCT/NOV/DEC	8	0	0
JAN/FEB/MAR	-2	0	0
APR/MAY/JUNE	13	0	0

GOALS AND ACTUAL NEW CLUBS CUMULATIVE



GOALS AND ACTUAL MEMBERS CUMULATIVE



DROPPED CLUBS: 0	4 CLUBS OF 40 ADDED 1 OR MORE NEW MEMBERS	<b>GENDER DISTRIBUTION</b> MALE 872 (78.49%) FEMALE 239 (21.51%) Women Percentage Fiscal Year Goal: 24%
<b>DROPPED MEMBERS</b>	<a href="#">CLICK HERE FOR CUMULATIVE MEMBERSHIP DATA</a>	TOTAL FAMILY UNIT MEMBERS 189
DECEASED 3		FAMILY MEMBERS PAYING HALF DUES 99
CLUB CANCELLED 0		
OTHER 1		
<b>TOTAL 4</b>		